

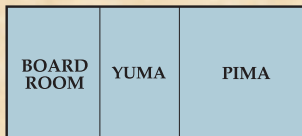
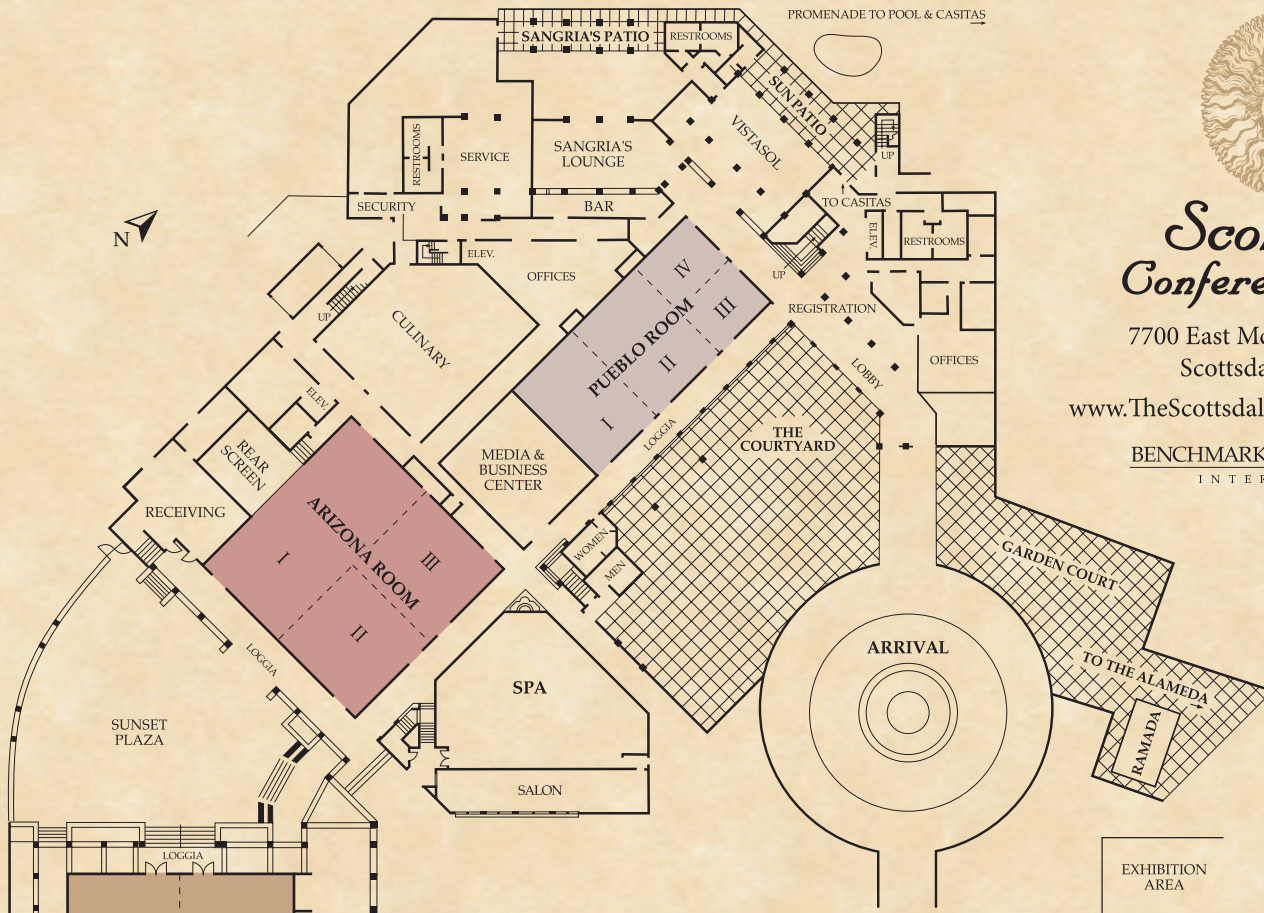


Scottsdale Conference Center

7700 East McCormick Parkway
Scottsdale, AZ. 85258

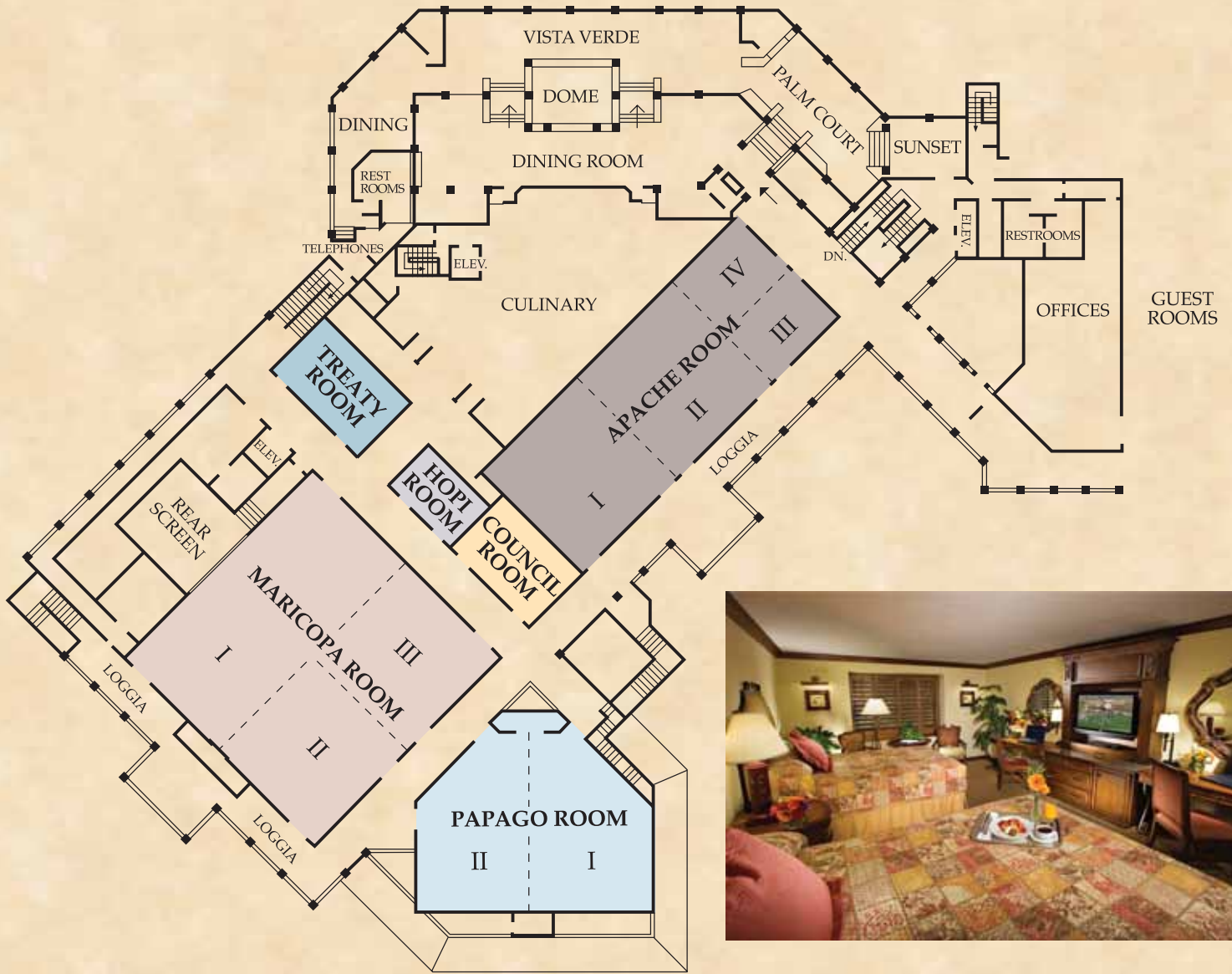
www.TheScottsdaleConferenceCenter.com

BENCHMARK HOSPITALITY INTERNATIONAL



Garden Level

	Dimensions	Sq. Feet	Theatre	Schoolroom	U-Shape	Banquet
Grand Coronado	120x80	10,000	1,000	640	N/A	700
<i>Ceiling Height - 22' Soffit 20'</i>						
I	40x80	3,200	324	144	76	210
II	40x40	1,600	144	70	36	90
III	40x40	1,600	144	70	36	90
IV	40x40	1,600	144	70	36	90
V	40x40	1,600	144	70	36	90
Arizona	78x78	6,084	660	308	88	420
I	78x39	3,042	264	132	80	180
II	39x39	1,521	120	77	36	90
III	39x39	1,521	120	77	36	90
II & III	78x39	3,042	248	132	80	180
Pueblo	89x41	3,649	432	240	84	240
I	31x41	1,271	108	64	30	80
II	31x41	1,271	108	64	30	80
III & IV	27x41	1,107	96	36	24	70
III	27x20	540	50	21	18	30
IV	27x21	567	50	21	18	30
Boardroom	39x29	1,131	84	48	28	80
Pima	49x39	1,911	180	70	36	120
Yuma	29x30	870	50	32	22	40
The Courtyard	-	-	-	-	-	380
Sunset Plaza	-	-	-	-	-	350
Main Pool	-	-	-	-	-	700
Casita Pool	-	-	-	-	-	330
The Alameda	-	-	-	-	-	600



Third Level

	Dimensions	Sq. Feet	Theatre	Schoolroom	U-Shape	Banquet
Maricopa	78x78	6,084	660	308	88	420
I	78x39	3,042	264	132	80	180
II	39x39	1,521	120	77	36	90
III	39x39	1,521	120	77	36	90
II & III	78x39	3,042	248	132	80	180
Papago	66x40	2,640	220	144	52	190
I	33x40	1,320	110	60	24	80
II	33x40	1,320	110	60	24	80
Apache	105x41	4,305	480	272	84	270
I	39x41	1,599	124	64	30	90
II	39x41	1,599	124	64	30	90
III & IV	27x41	1,107	96	36	24	70
III	27x20	540	50	18	18	30
IV	27x21	567	50	18	18	30
Council	31x21	651	48	30	20	40
Treaty	33x21	693	48	30	20	40
Hopi	21x14	294	16	9	N/A	10

18 Conference Suites of varying sizes accomodating 10 - 20